

**Talsu iela 200, Ventspils**

Kontaktpersona:  
Pasūtījuma nr.:  
SIA:  
Klients:  
e-pasts:

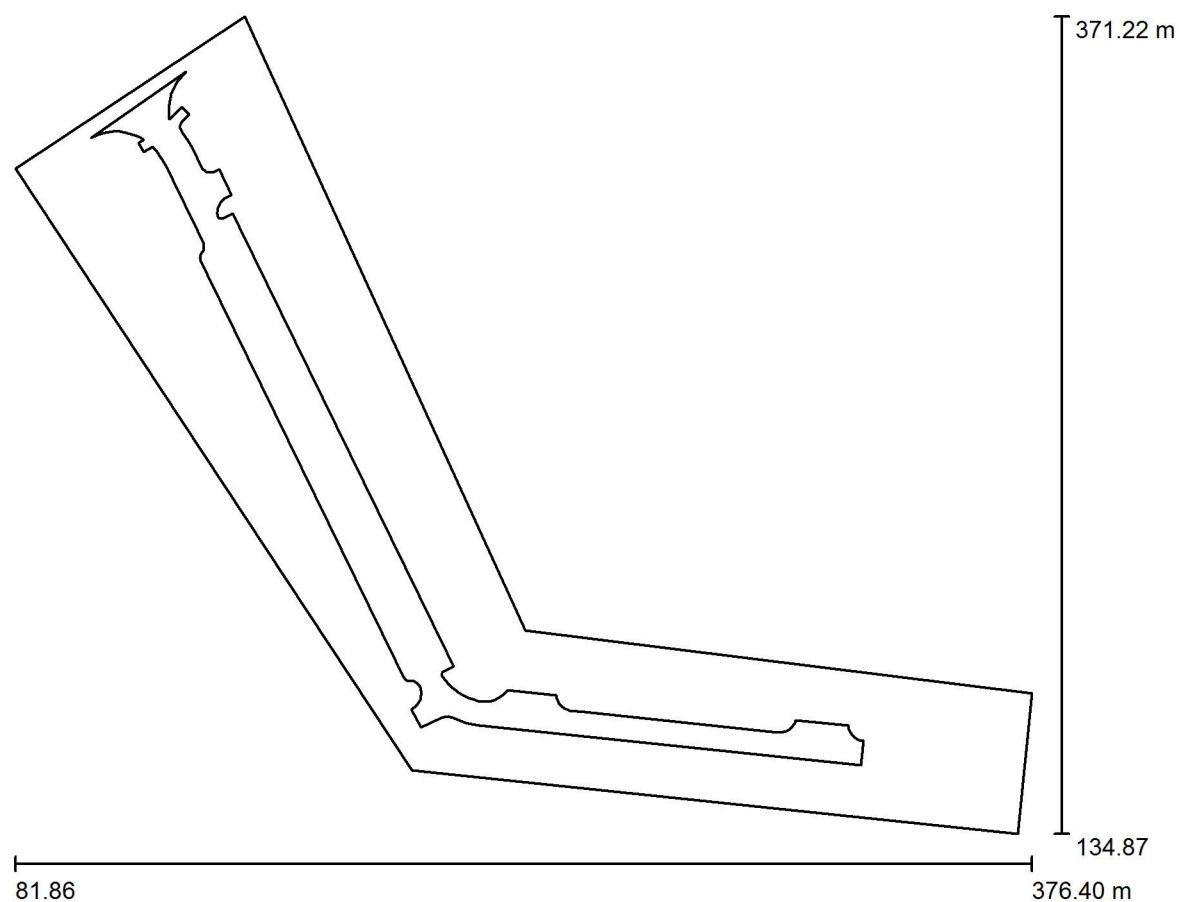
Date: 05.01.2017  
Operator: Jānis Škutāns



Gaismas Stils SIA  
www.gaismasstils.lv  
Maskavas iela 12,  
Rīga LV-1050

Operator Jānis Škutāns  
Telephone +371 67797441  
Fax +371 67797444  
e-Mail janis.skutans@gaismasstils.lv

## Talsu iela 200, Ventspils / Planning data



Maintenance factor: 0.90, ULR (Upward Light Ratio): 0.0%

Scale 1:2191

### Luminaire Parts List

No.	Pieces	Designation (Correction Factor)	$\Phi$ (Luminaire) [lm]	$\Phi$ (Lamps) [lm]	P [W]
1	11	CREE XSPC02210E--K_24-Q4 3000K XSP1 - E - Type 210 - Q4 3000K (1.000)	5580	6002	73.0
Total:			61378	66022	803.0



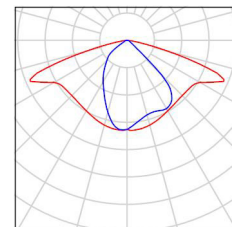
Gaismas Stils SIA  
www.gaismasstils.lv  
Maskavas iela 12,  
Rīga LV-1050

Operator Jānis Škutāns  
Telephone +371 67797441  
Fax +371 67797444  
e-Mail janis.skutans@gaismasstils.lv

## Talsu iela 200, Ventspils / Luminaire parts list

11 Pieces CREE XSPC02210E--K\_24-Q4 3000K XSP1 - E  
- Type 210 - Q4 3000K  
Article No.: XSPC02210E--K\_24-Q4 3000K  
Luminous flux (Luminaire): 5580 lm  
Luminous flux (Lamps): 6002 lm  
Luminaire Wattage: 73.0 W  
Luminaire classification according to CIE: 100  
CIE flux code: 45 77 97 100 93  
Fitting: 1 x 5 LED MD-A Q4 3K 12V (Correction  
Factor 1.000).

See our luminaire  
catalog for an image of  
the luminaire.





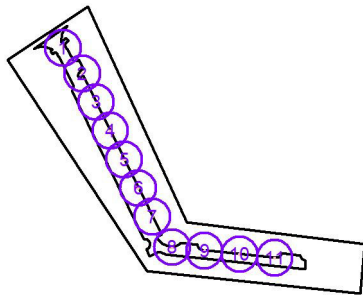
Gaismas Stils SIA  
www.gaismasstils.lv  
Maskavas iela 12,  
Rīga LV-1050

Operator Jānis Škutāns  
Telephone +371 67797441  
Fax +371 67797444  
e-Mail janis.skutans@gaismasstils.lv

## Talsu iela 200, Ventspils / Luminaires (coordinates list)

### CREE XSPC02210E--K\_24-Q4 3000K XSP1 - E - Type 210 - Q4 3000K

5580 lm, 73.0 W, 1 x 1 x 5 LED MD-A Q4 3K 12V (Correction Factor 1.000).



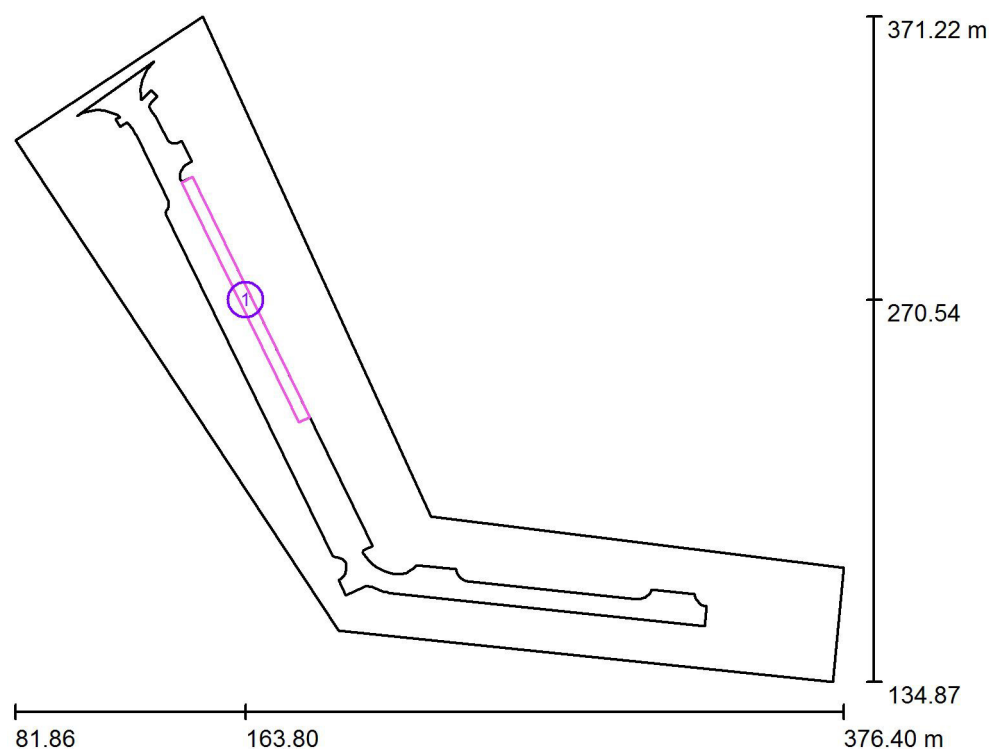
No.	Position [m]			Rotation [°]		
	X	Y	Z	X	Y	Z
1	127.896	337.021	10.000	10.0	0.0	123.0
2	143.654	316.031	10.000	10.0	0.0	119.5
3	155.211	292.354	10.000	10.0	0.0	119.5
4	166.748	268.701	10.000	10.0	0.0	119.5
5	178.321	245.106	10.000	10.0	0.0	119.5
6	189.850	221.493	10.000	10.0	0.0	119.5
7	201.372	197.854	10.000	10.0	0.0	119.5
8	217.796	172.862	10.000	10.0	0.0	175.1
9	244.503	169.973	10.000	10.0	0.0	174.0
10	273.319	166.919	10.000	10.0	0.0	174.0
11	302.169	163.961	10.000	10.0	0.0	174.0



Gaismas Stils SIA  
www.gaismasstils.lv  
Maskavas iela 12,  
Rīga LV-1050

Operator Jānis Škutāns  
Telephone +371 67797441  
Fax +371 67797444  
e-Mail janis.skutans@gaismasstils.lv

## Talsu iela 200, Ventspils / Calculation surfaces (results overview)



Scale 1 : 2690

### Calculation Surface List

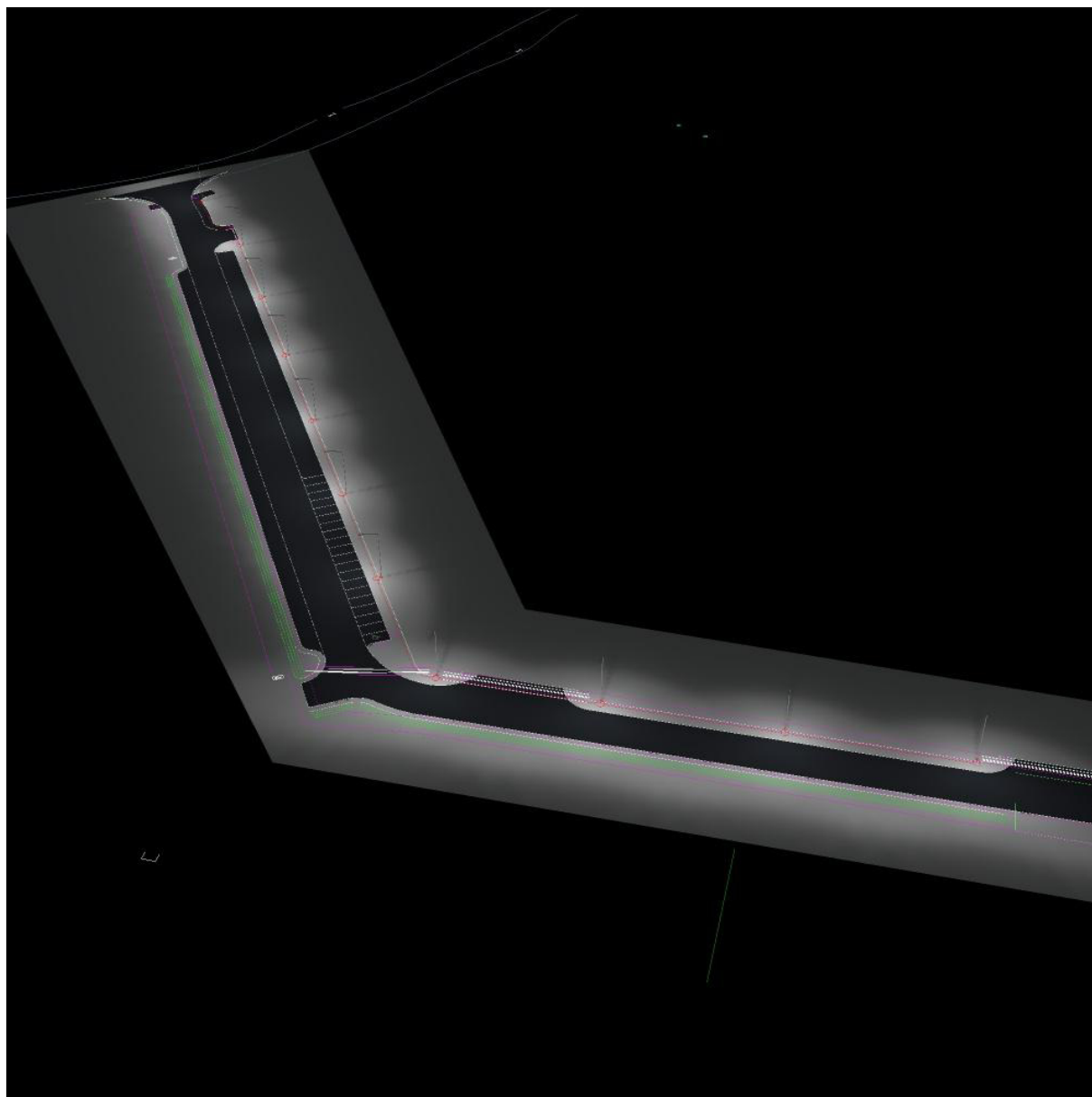
No.	Designation	Type	Grid	$E_{av}$ [lx]	$E_{min}$ [lx]	$E_{max}$ [lx]	u0	$E_{min} / E_{max}$
1	Perspektīvās autostāvvietas	perpendicular	128 x 16	11	5.71	19	0.508	0.294



Gaismas Stils SIA  
www.gaismasstils.lv  
Maskavas iela 12,  
Rīga LV-1050

Operator Jānis Škutāns  
Telephone +371 67797441  
Fax +371 67797444  
e-Mail janis.skutans@gaismasstils.lv

## Talsu iela 200, Ventspils / 3D Rendering

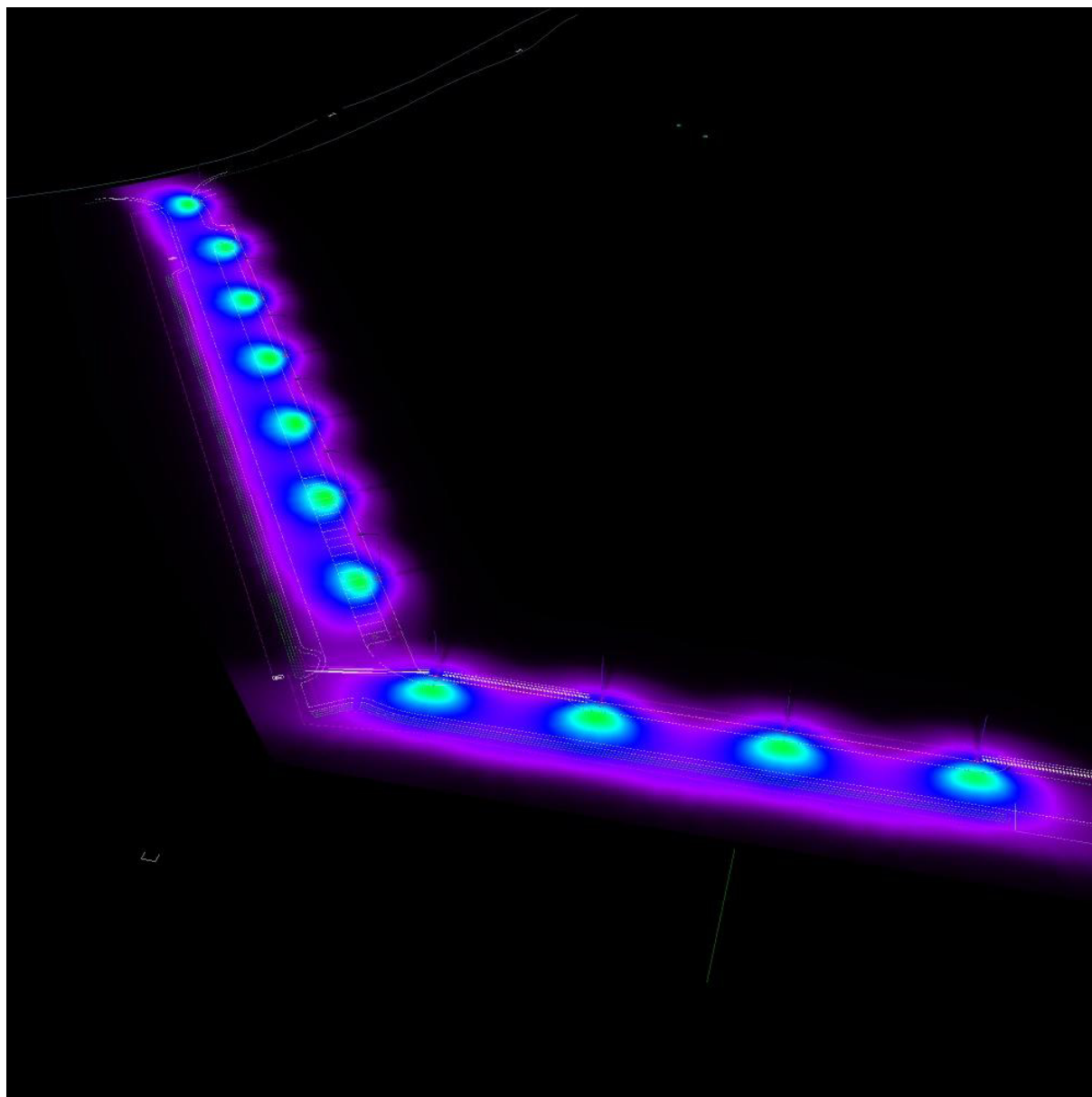




Gaismas Stils SIA  
www.gaismasstils.lv  
Maskavas iela 12,  
Rīga LV-1050

Operator Jānis Škutāns  
Telephone +371 67797441  
Fax +371 67797444  
e-Mail janis.skutans@gaismasstils.lv

## Talsu iela 200, Ventspils / False Colour Rendering



0 5 10 15 20 25 30 40 50 lx



Gaismas Stils SIA  
www.gaismasstils.lv  
Maskavas iela 12,  
Rīga LV-1050

Operator Jānis Škutāns  
Telephone +371 67797441  
Fax +371 67797444  
e-Mail janis.skutans@gaismasstils.lv

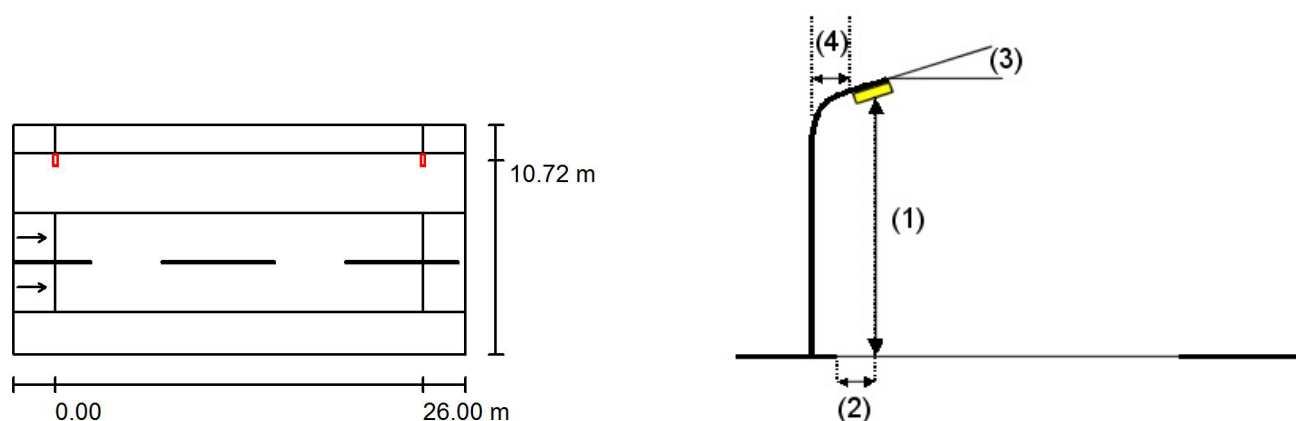
## Talsu iela 200, Ventspils (ielas profila aprēķins) / Planning data

### Street Profile

Sidewalk 1 (Width: 2.000 m)  
Lay-by 1 (Width: 4.200 m)  
Roadway 1 (Width: 7.000 m, Number of lanes: 2, tarmac: R3, q0: 0.070)  
Lay-by 2 (Width: 3.000 m)

Maintenance factor: 0.90

### Luminaire Arrangements



Luminaire:	CREE XSPC02210E--K_24-Q4 3000K XSP1 - E - Type 210 - Q4 3000K
Luminous flux (Luminaire):	5580 lm
Luminous flux (Lamps):	6002 lm
Luminaire Wattage:	73.0 W
Arrangement:	Single row, top
Pole Distance:	26.000 m
Mounting Height (1):	10.000 m
Height:	9.902 m
Overhang (2):	-3.700 m
Boom Angle (3):	10.0 °
Boom Length (4):	2.500 m

#### Maximum luminous intensities

at 70°: 666 cd/klm  
at 80°: 281 cd/klm  
at 90°: 8.29 cd/klm

Any direction forming the specified angle from the downward vertical, with the luminaire installed for use.

Arrangement complies with glare index class D.0.





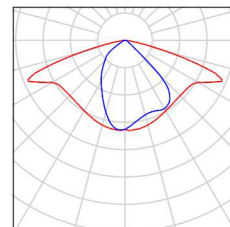
Gaismas Stils SIA  
www.gaismasstils.lv  
Maskavas iela 12,  
Rīga LV-1050

Operator Jānis Škutāns  
Telephone +371 67797441  
Fax +371 67797444  
e-Mail janis.skutans@gaismasstils.lv

## Talsu iela 200, Ventspils (ielas profila aprēķins) / Luminaire parts list

CREE XSPC02210E--K\_24-Q4 3000K XSP1 - E  
- Type 210 - Q4 3000K  
Article No.: XSPC02210E--K\_24-Q4 3000K  
Luminous flux (Luminaire): 5580 lm  
Luminous flux (Lamps): 6002 lm  
Luminaire Wattage: 73.0 W  
Luminaire classification according to CIE: 100  
CIE flux code: 45 77 97 100 93  
Fitting: 1 x 5 LED MD-A Q4 3K 12V (Correction  
Factor 1.000).

See our luminaire  
catalog for an image of  
the luminaire.

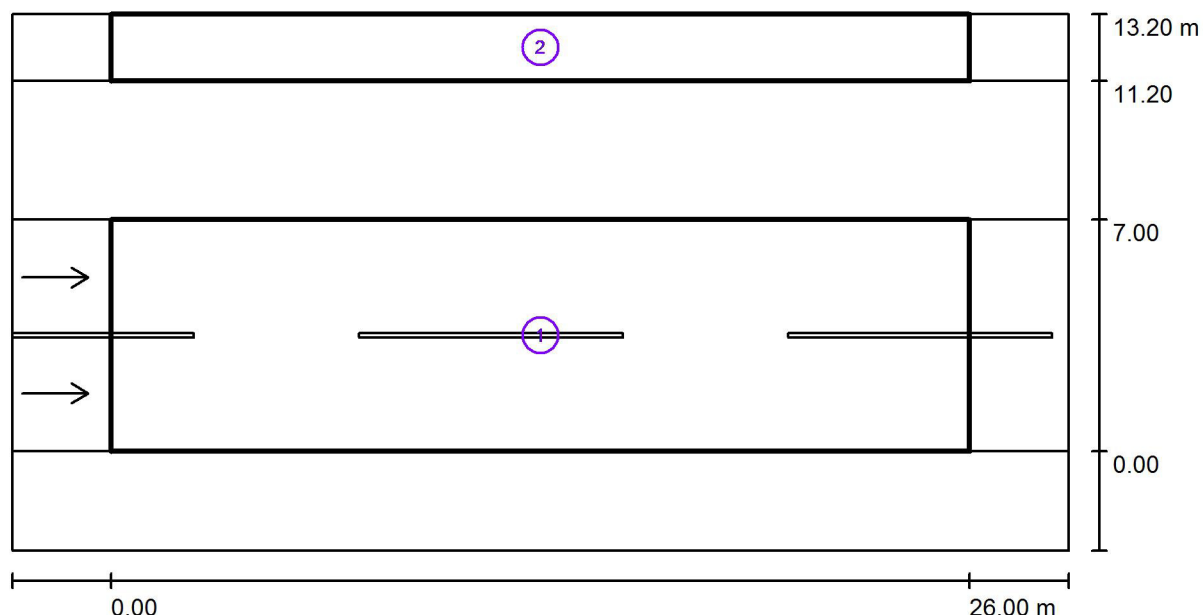




Gaismas Stils SIA  
www.gaismasstils.lv  
Maskavas iela 12,  
Rīga LV-1050

Operator Jānis Škutāns  
Telephone +371 67797441  
Fax +371 67797444  
e-Mail janis.skutans@gaismasstils.lv

## Talsu iela 200, Ventspils (Ielas profila aprēķins) / Photometric Results



Maintenance factor: 0.90

Scale 1:229

### Calculation Field List

- Valuation Field Roadway 1  
Length: 26.000 m, Width: 7.000 m  
Grid: 10 x 6 Points  
Accompanying Street Elements: Roadway 1.  
tarmac: R3, q0: 0.070  
Selected Lighting Class: ME5

(All lighting performance requirements are met.)

	$L_{av}$ [cd/m <sup>2</sup> ]	U0	UI	TI [%]	SR
Calculated values:	0.55	0.58	0.85	11	0.93
Required values according to class:	≥ 0.50	≥ 0.35	≥ 0.40	≤ 15	≥ 0.50
Fulfilled/Not fulfilled:	✓	✓	✓	✓	✓



Gaismas Stils SIA  
www.gaismasstils.lv  
Maskavas iela 12,  
Rīga LV-1050

Operator Jānis Škutāns  
Telephone +371 67797441  
Fax +371 67797444  
e-Mail janis.skutans@gaismasstils.lv

## Talsu iela 200, Ventspils (Ielas profila aprēķins) / Photometric Results

### Calculation Field List

- 2 Valuation Field Sidewalk 1  
Length: 26.000 m, Width: 2.000 m  
Grid: 10 x 3 Points  
Accompanying Street Elements: Sidewalk 1.  
Selected Lighting Class: CE5 (All lighting performance requirements are met.)

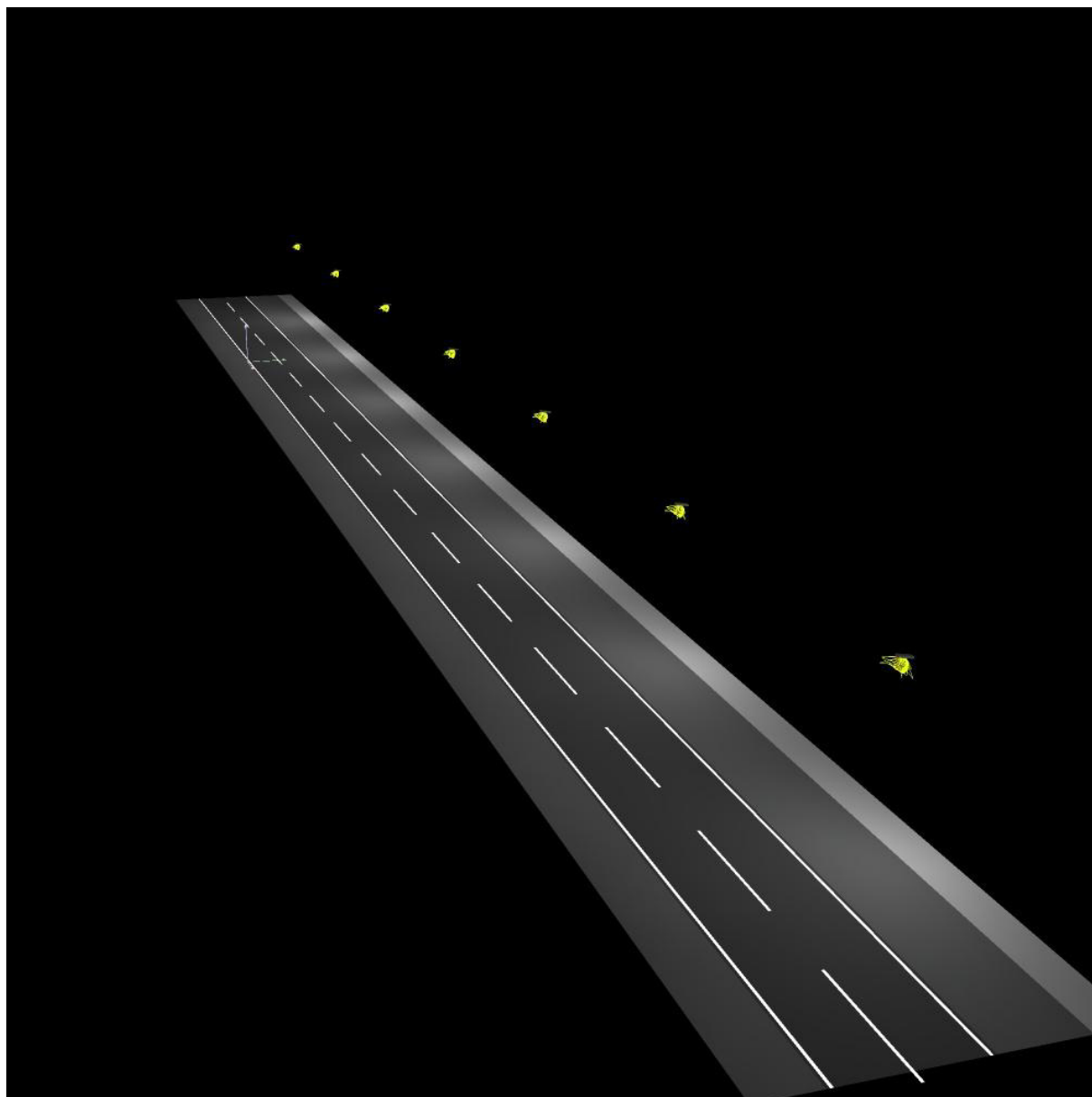
	$E_{av}$ [lx]	U0
Calculated values:	8.31	0.50
Required values according to class:	$\geq 7.50$	$\geq 0.40$
Fulfilled/Not fulfilled:	✓	✓



Gaismas Stils SIA  
www.gaismasstils.lv  
Maskavas iela 12,  
Rīga LV-1050

Operator Jānis Škutāns  
Telephone +371 67797441  
Fax +371 67797444  
e-Mail janis.skutans@gaismasstils.lv

### Talsu iela 200, Ventspils (Ielas profila aprēķins) / 3D Rendering

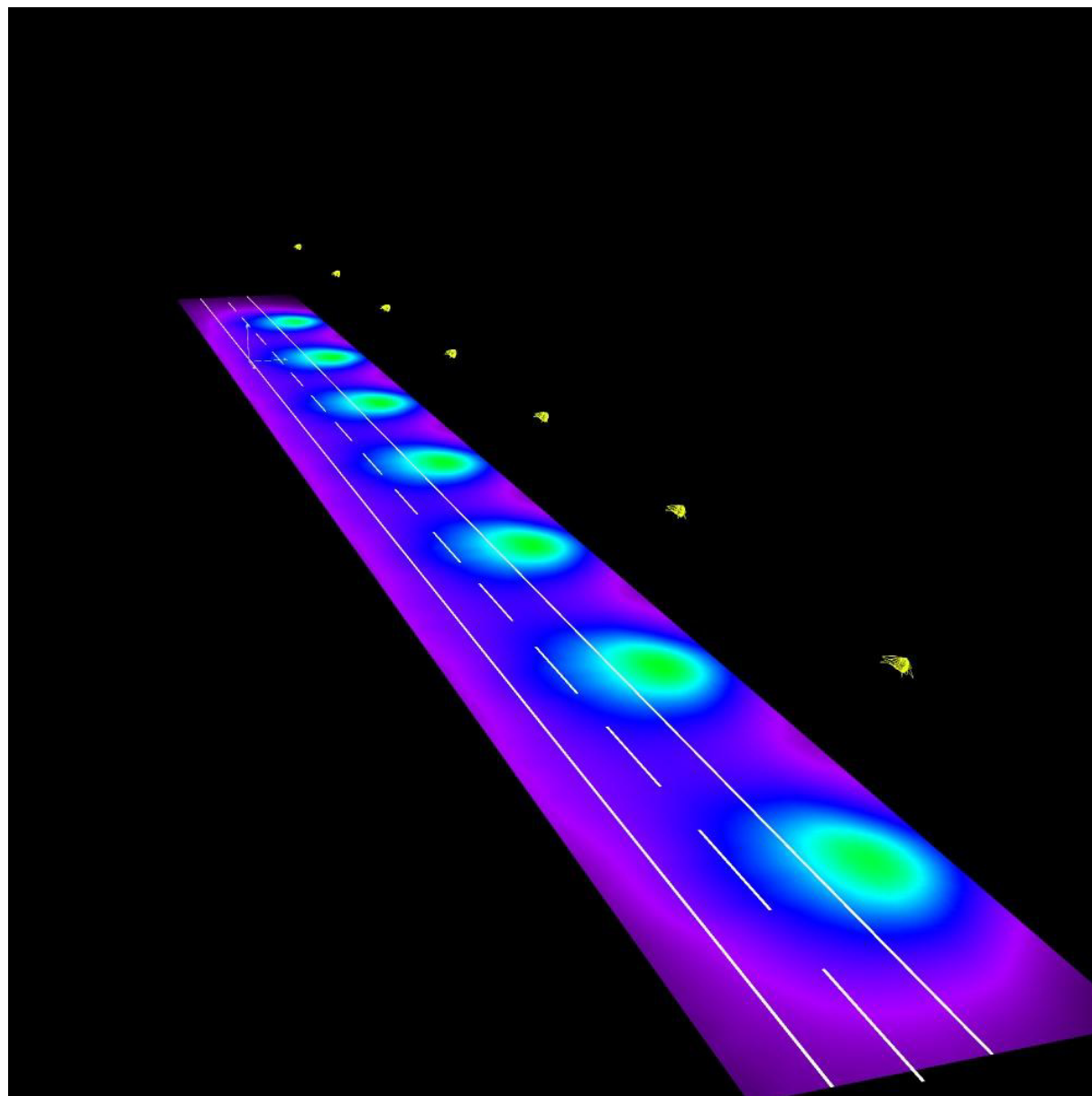




Gaismas Stils SIA  
www.gaismasstils.lv  
Maskavas iela 12,  
Rīga LV-1050

Operator Jānis Škutāns  
Telephone +371 67797441  
Fax +371 67797444  
e-Mail janis.skutans@gaismasstils.lv

## Talsu iela 200, Ventspils (Ielas profila aprēķins) / False Colour Rendering



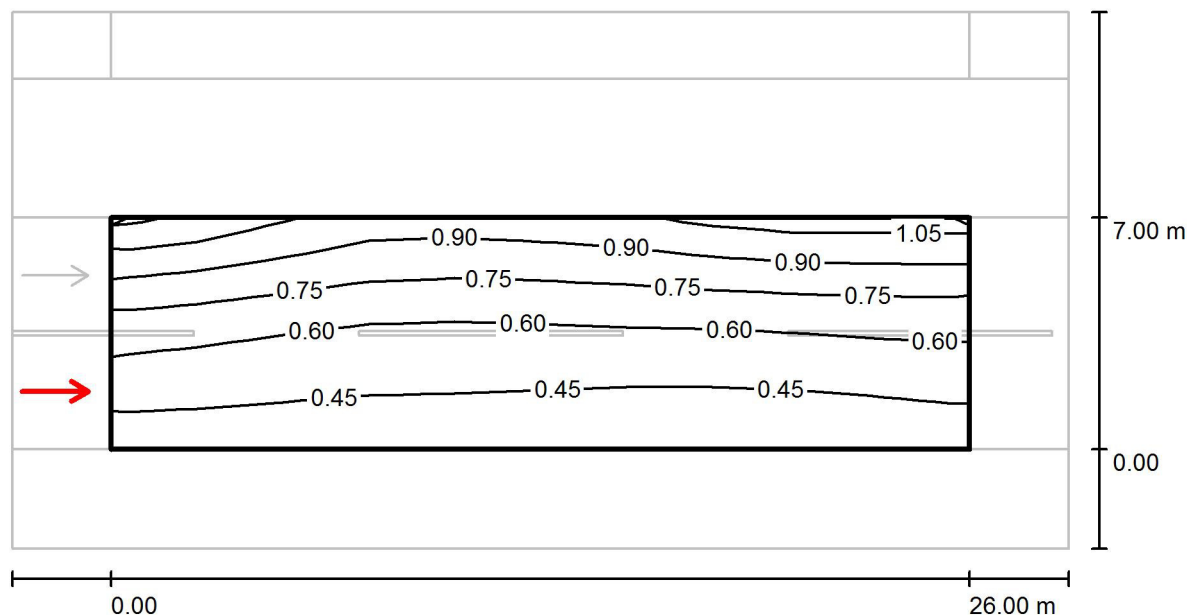
0 5 10 15 20 25 30 40 50 lx



Gaismas Stils SIA  
www.gaismasstils.lv  
Maskavas iela 12,  
Rīga LV-1050

Operator Jānis Škutāns  
Telephone +371 67797441  
Fax +371 67797444  
e-Mail janis.skutans@gaismasstils.lv

## Talsu iela 200, Ventspils (Ielas profila aprēķins) / Valuation Field Roadway 1 / Observer 1 / Isolines (L)



Values in Candela/m<sup>2</sup>, Scale 1 : 229

Grid: 10 x 6 Points

Observer Position: (-60.000 m, 1.750 m, 1.500 m)

tarmac: R3, q0: 0.070

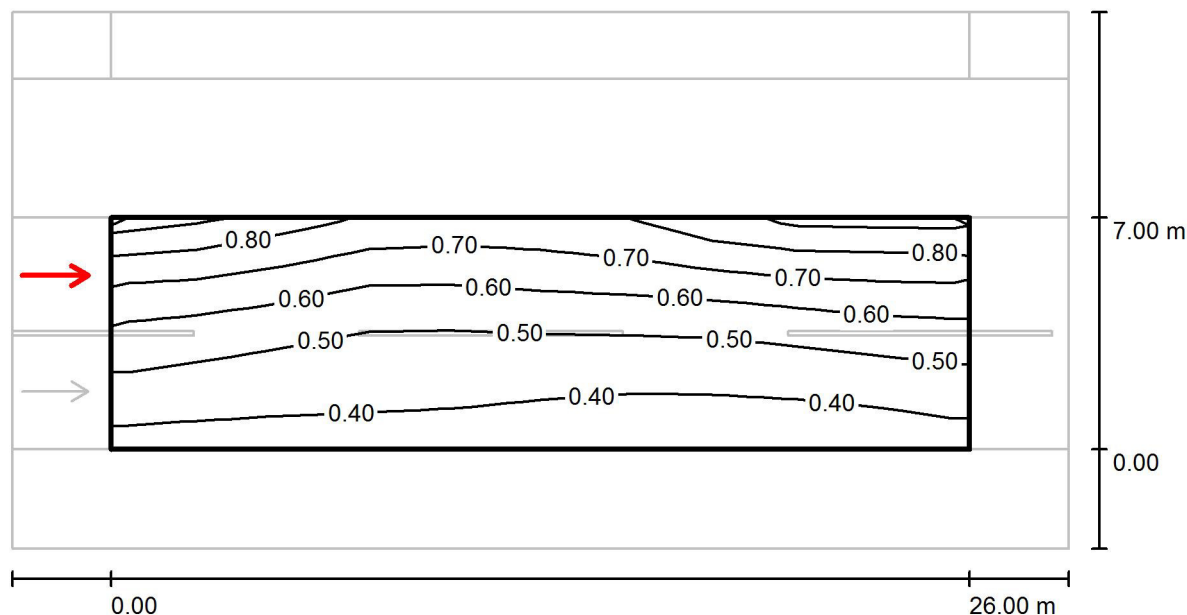
	$L_{av}$ [cd/m <sup>2</sup> ]	U0	UI	TI [%]
Calculated values:	0.64	0.58	0.89	7
Required values according to class ME5:	≥ 0.50	≥ 0.35	≥ 0.40	≤ 15
Fulfilled/Not fulfilled:	✓	✓	✓	✓



Gaismas Stils SIA  
www.gaismasstils.lv  
Maskavas iela 12,  
Rīga LV-1050

Operator Jānis Škutāns  
Telephone +371 67797441  
Fax +371 67797444  
e-Mail janis.skutans@gaismasstils.lv

## Talsu iela 200, Ventspils (Ielas profila aprēķins) / Valuation Field Roadway 1 / Observer 2 / Isolines (L)



Values in Candela/m², Scale 1 : 229

Grid: 10 x 6 Points

Observer Position: (-60.000 m, 5.250 m, 1.500 m)

tarmac: R3, q0: 0.070

	$L_{av}$ [cd/m²]	U0	UI	TI [%]
Calculated values:	0.55	0.64	0.85	11
Required values according to class ME5:	$\geq 0.50$	$\geq 0.35$	$\geq 0.40$	$\leq 15$
Fulfilled/Not fulfilled:	✓	✓	✓	✓